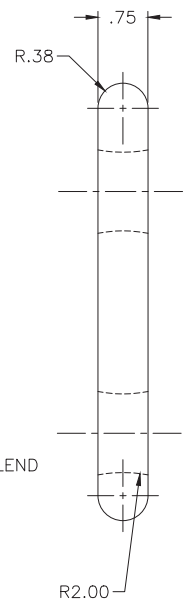
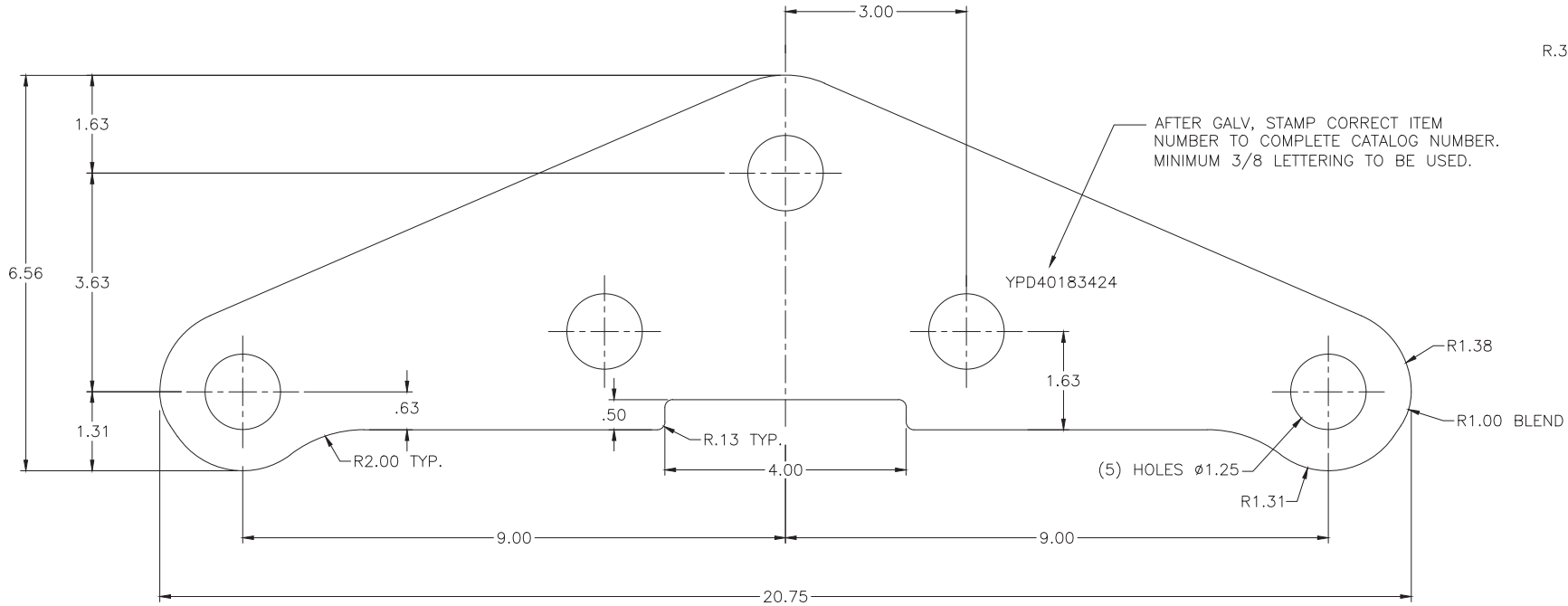
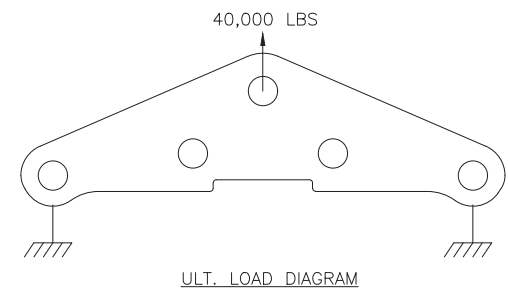


4

3

2

1



- NOTES:
1. MATERIAL: GALV. DUCTILE IRON
 2. WEIGHT: 13.3 LBS. APPROX.
 3. ANY COLD WORKING MUST BE PER ASTM A143.
 4. HOT DIP GALV. PER ASTM A153.
 5. DIMENSIONS IN INCHES.

| | | | | |
|--|------|--------|--------|---------|
| -- | -- | -- | DJ | DJ |
| EC # | DATE | CHG BY | CKD BY | APPD BY |
| DESC OF DWG: DRAWING CREATED IN AUTOCAD | | | | |
| PRELIMINARY ONLY | | | | |
| REASON (S) FOR CHANGE: -- | | | | |
| DISPOSITION OF MAT'L: -- | | | | |

| | | | |
|-----------------------------|------------|-------------------------------|--------------|
| | | HUBBELL® POWER SYSTEMS | |
| TITLE YOKE PLATE | | | |
| CATALOG NUMBER: YPD40183424 | | | |
| SIZE | DWG NO. | PART / ASSY NO. | REV |
| C | CUTSHEET | -- | A |
| SCALE: NS | DRN BY: SV | DATE: 04/10/19 | SHEET 1 OF 1 |

4

3

2

1 UNCONTROLLED COPY WHEN PRINTED